

## CORIO CP-200F Refrigerated/Heating Circulator

with an enhanced pump performance and a temperature range up to +200°C

Refrigerated Circulators from the CORIO CP range are suitable for applications with a temperature range up to +200°C. The enhanced pump performance ensures they are suitable for easy temperature control tasks in combination with external applications.

### Your advantages

- Models for internal and external applications
- Bright, white, easy-to-read display
- Very quiet
- Easy change-over from internal to external circulation and vice versa
- External pump connections (M16x1)
- USB interface
- R232 interface
- Space-saving cooling coil design provides more usable space in the bath tank
- Bath lid and drain tap included
- Removable ventilation grid
- Refrigeration unit without side vents
- System for low liquid level
- Class III (FL) according to DIN 12876-1



Made in Germany

### Technical Data

Order No.	9013701						
Model series	CORIO						
Category	Refrigerated - Heating Circulators						
Working temperature range (°C)	-20 ... +200						
Temperature control	PID						
Temperature stability (°C)	±0.03						
Setting / display resolution	0.01 – 0.1 °C						
Temperature Display	LED						
Heating capacity (kW)	1						
Cooling capacity (Medium Ethanol)	°C	200	20	10	0	-10	-20
	kW	0.2	0.2	0.17	0.15	0.1	0.02
Pump capacity flow rate (l/min)	8 ... 27						
Pump capacity flow pressure (psi)	1.5 ... 10.2						
Bath opening / bath depth (W x L / D inch)	5.1 x 5.9 / 5.9						
Pump connections	M16x1						
Barbed fittings diameter (inner dia. / mm)	8 / 12						
Filling volume liters	3 ... 4						
Refrigerant stage 1	R134a						
Filling volume refrigerant stage 1 (g)	70						

Global Warming Potential for	1430
Carbon dioxide equivalent stage 1 (t)	0.1
Ambient temperature	5...40 °C
Dimensions W x L x H (inch)	9.1 x 15.4 x 25.6
Weight (LBS)	57.3
Included with each unit	2 each barbed fitting for tubing 8 and 12 mm inner dia. (pump connections M16x1 male)
Bath tank	Stainless steel
Bath cover	integrated
Cooling of compressor	Air
Available voltage versions	230V/50-60Hz 115 V / 60 Hz 100 V / 50-60 Hz

## Characteristics



### 100% Checked.

100% testing. 100% quality. Each CORIO undergoes thorough quality testing before leaving the factory.



### More bath.

Designed for more comfort. Thanks to the recessed cooling coil, the internal bath provides more space.



### ATC.

Absolute Temperature Calibration, 1-point calibration (CD).



### Powerful. Adjustable.

Strong pressure pump, continuously adjustable.



### Brilliant.

Bright display with strong illumination can be viewed easily from a long distance.



### Quick start.

Individual JULABO consultation and comprehensive manuals at your disposal.



### Condensation protection.

Superb design solution. Integrated ventilation directs air over the bath lid and minimizes condensation.



### Safety.

CORIO complies with Class III (FL) according to DIN 12876-1 and switches off automatically in case of high temperature or low liquid level alarm.



### Connection. Easy.

Inclined pump connections (M16x1) facilitate the connection of applications. Each unit includes 2 barbed fittings of 8/12 mm diameter each.



### Satisfied customers.

11 subsidiaries and more than 100 partners worldwide guarantee fast and qualified JULABO support.



**Connectivity.**

Remote control made easy. CORIO CP circulators feature a USB connection.



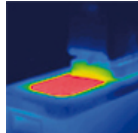
**Services 24/7.**

Around the clock availability. You can find suitable accessories, data sheets, manuals, case studies, and more at [www.julabo.com](http://www.julabo.com).



**Early warning system for low liquid level.**

Maximum safety for your application. Optical and audible alarm allows user to refill bath fluid in time.



**Solid.**

Minimized energy loss through high-quality insulation.



**Everything at the front.**

All operating controls and safety functions are accessed easily and comfortably from the front.



**Space saving. Free up space.**

Place your JULABO Circulator right next to an application, another unit, or wall. That saves space. This is made possible by eliminating vents and connections on the sides.



**Exact.**

You can rely on it. PID1 control and 'Active Cooling Control' make the new CORIO precise and perfect.



**Stable.**

Rubber feet allow for a secured footing of your CORIO to prevent damage to your laboratory equipment.



**Green technology.**

Development consistently applied environmentally friendly materials and technologies.



**Switch on. And off you go.**

Intelligent operating concept. Ready for operation with just a few quick and easy steps.



**Handle with ease.**

Makes day-to-day work easy. Comfortably move your CORIO around by using the ergonomic handles (front and rear).



**Click.**

One for all. Control the circulator and the refrigeration unit with only one power switch.



**Internal. External.**

The pump is controlled via a lever located directly below the display. Easily change between internal and external circulation.



**Tidy.**

The special drain tap for easy draining of bath fluids without tools.



**JULABO. Quality.**

Highest standards of quality for a long product life.



**Timer. Integrated.**

CORIO circulators include an integrated timer function. When the set time has elapsed, a signal sounds and the device switches off. Setting range: 0 ... 999 minutes.



**Locked in.**

The lockable power plug guarantees safe connection. More process safety.



**Touching permitted.**

Optimum safety. The ergonomic plastic handle protects your fingers from hot surfaces.



**Mobile.**

Extra easy handling. Integrated castors for easy repositioning of refrigerated circulators. (CD-600F, CD-601F, CD-900F, CD-1000F, CD-1001F)



**Unique.**

Specially designed pyramids ensure that the condensed liquid drips directly back into the bath.